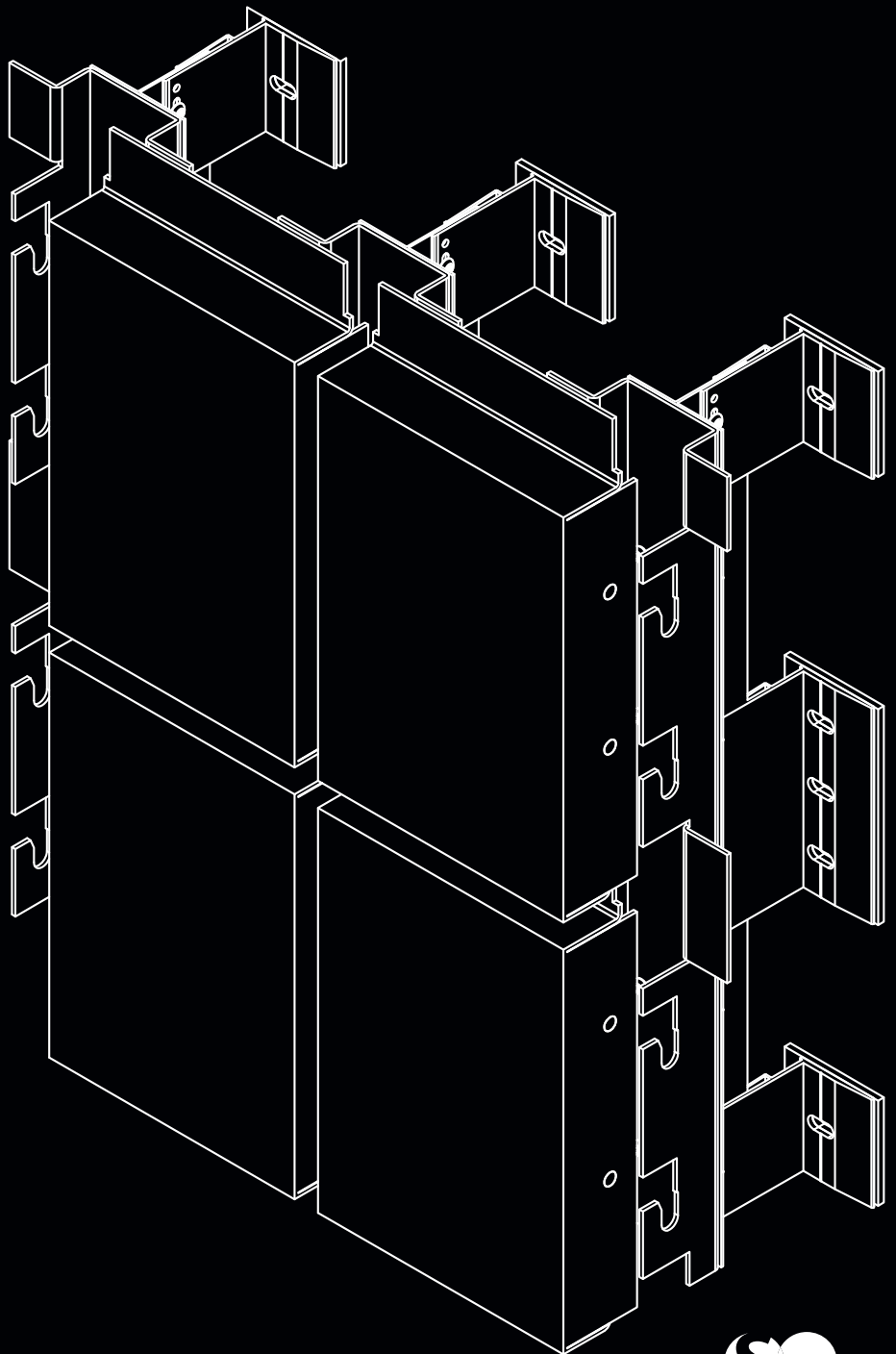




# OPTIMA<sup>®</sup> SC4 TECHNICAL INFORMATION

Post coated secret fix panel system with CNC formed carriers offers greater ease of pressure equalisation



Sole designers and manufacturers of the Optima<sup>®</sup> range of engineered rainscreen cladding systems



**SOTECH**  
architectural façade systems

## Sotech Optima SC4

Post coated secret fix panel system with CNC formed carriers offers greater ease of pressure equalisation

The SC4 system provides panels with integral structural support pins enabling them to be hooked on and secretly fixed to an aluminium carrier profile. The cosmetically flat and uniform appearance is a result of the superior design and manufacturing techniques employed.

The system has been independently tested and certified to meet CWCT rigorous specification for rainscreen cladding.

This drained and ventilated system consists of a baffle-jointed series of panels that creates a weather shield in front of a primary structure.

A support system of extruded, fully adjustable brackets and carrier profiles offer hands free lining and levelling. Cladding zones from 100mm - 320mm are standard. The brackets are isolated at connection points to reduce thermal transmittance to negligible levels.

Optima SC4 is engineered to seamlessly integrate with all other building façade elements such as windows, doors and louvres etc. All fixings used within the system are stainless steel.

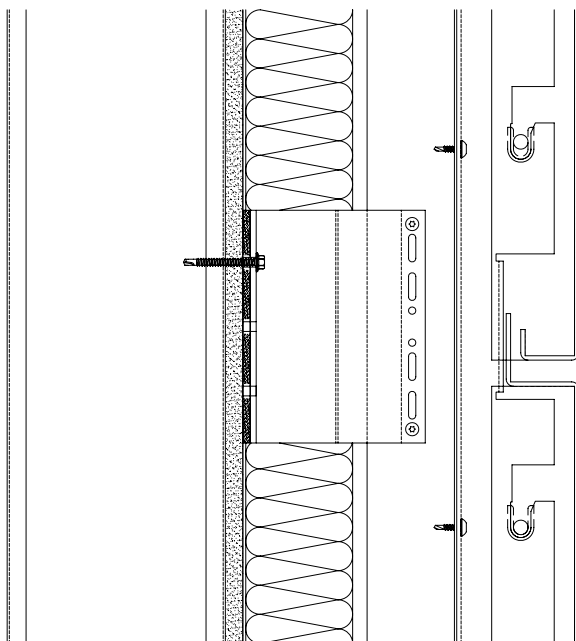
### Specialist Fabrications

A full range of ancillary products is available in matching or contrasting finishes engineered to the same high standards as the system. These range from bullnose units and flashings to insulated gutters and rainwater goods.

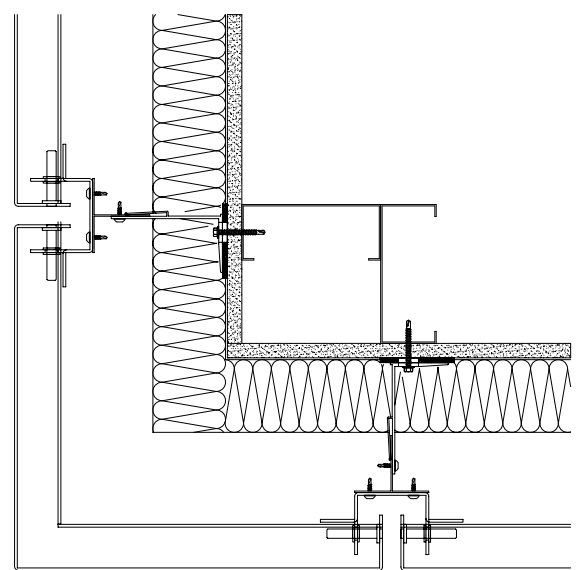
Optima products are manufactured in a state-of-the-art facility designed for, and dedicated to, high quality rainscreen and architectural systems production. This facility is operated and staffed by skilled designers and engineers utilising a suite of 2D and 3D design packages, fully automatic punching machines, CNC routers, compensated pressbrakes, rollers and welding stations.

### SYSTEM BENEFITS

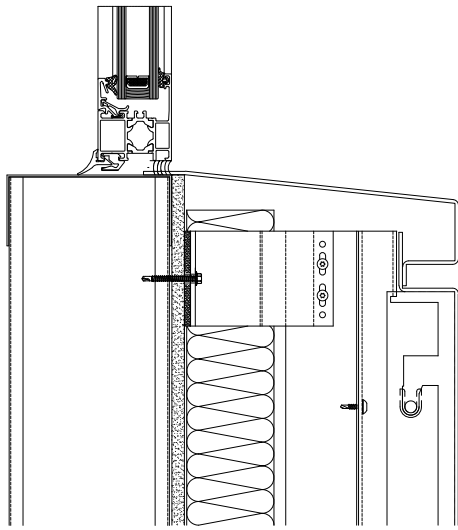
- A complete secretly fixed rainscreen system
- Easily pressure equalised
- The system bracketry is designed to accommodate tolerances present in any backing wall for either new build or refurbishment projects
- Suitable for all wall constructions
- Standard panel lengths available up to 4.4m
- Low maintenance system with very long life
- Accurate installation is both simple and speedy
- Individual panels are easily demountable for element replacement or inspection purposes
- System is fully and beneficially recyclable
- A fully independently tested and accredited system to CWCT standards
- System does not support combustion and all components meet the requirements laid out in BS476, part 7, Class O



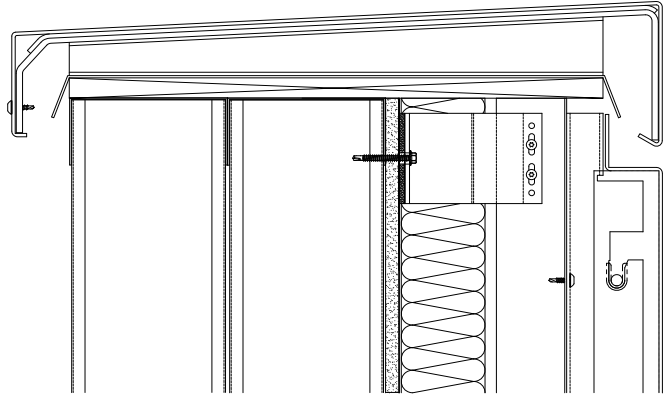
Horizontal Joint Detail



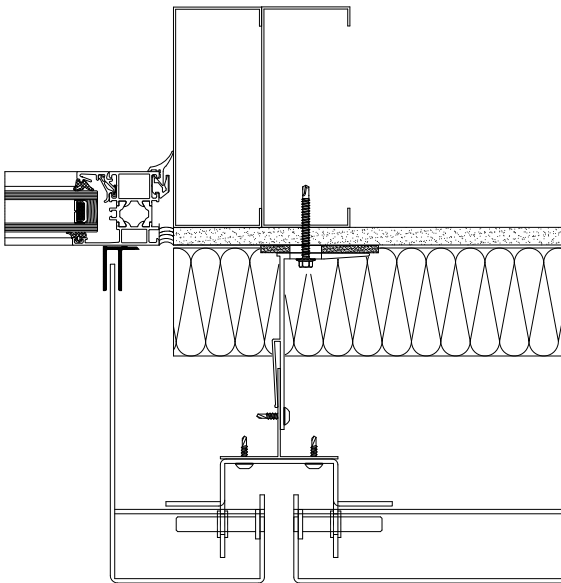
External Corner Detail



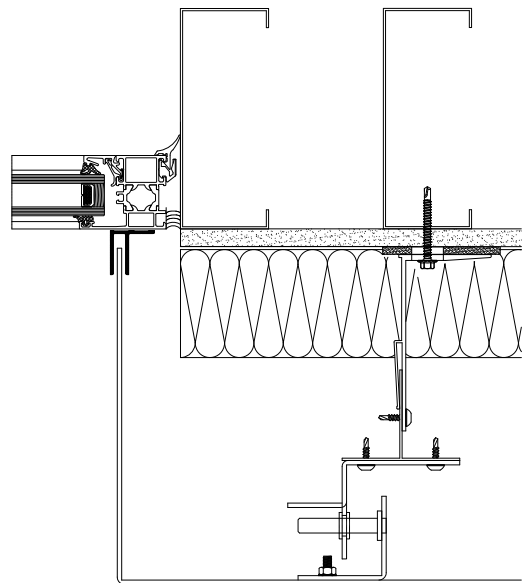
**Window Sill Detail**



**Coping Detail**



**Jamb Detail**



**Extended Leg Detail**

## RAINSCREEN SYSTEM

- Optima SC4 secret fix panels
- Drained and back ventilated

## RAINSCREEN PANEL

- Material - **Aluminium:**  
Polyester powder coating (PPC)  
Anodised in Natural, Bronze, Gold, Blue Grey and Black (with United Anodisers project lifetime guarantee)
- Thickness: 3mm
- Joint type: Open
- Joint width: 10mm-40mm
- CAD, CAM, CNC processes throughout
- ISO 9001 quality assured
- CWCT tested and accredited system

## SUPPORT SYSTEM

- 'Hands free' brackets
  - Cladding zone: 100mm - 320mm
    - Aluminium sub structure
    - Stainless steel fixings.

## NBS H92

Full NBS specifications are available for all Sotech Optima systems however great benefit is derived from project specific guidance and it is recommended that our free technical advisory service is consulted. This will assist in true and timely value engineering and the reduction of disappointment or delays at tender stage.

## DESIGN SUPPORT

In addition to the technical advisory service, utilised most often by architects and clients, full design support is available to the approved installer network.

## SOTECH PHILOSOPHY

Superior design and manufacturing inspires confident specifications, realises creativity and delivers successful projects.

"Taking our environmental responsibilities seriously."

By embracing ISO 14001 (Environmental Management Standard) Sotech continues to invest in environmental improvements wherever possible including recyclable prime materials, energy efficiencies and packaging reductions.

The regeneration and development of Baltic Mill, a disused and listed 1930s flourmill into a world-class art gallery, is synonymous with Sotech's appreciation of environmental issues. It incorporates 5000m<sup>2</sup> of easily recycled but extremely durable Optima anodised aluminium rainscreen cladding.



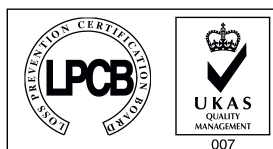
**SOTECH**  
architectural façade systems

Sotech Limited  
Unit 2  
Whitehouse Business Park  
Peterlee  
County Durham  
SR8 2RU

Tel: 0191 587 2287  
Fax: 0191 518 0703  
Email: [mail@sotech-optima.co.uk](mailto:mail@sotech-optima.co.uk)  
Web: [www.sotech-optima.co.uk](http://www.sotech-optima.co.uk)

**nbs**Plus

**rainscreenworks**



Assessed to ISO 9001:2000  
Certificate number 770

CENTRE FOR  
**WINDOW AND  
CLADDING**  
TECHNOLOGY

Sole designers and manufacturers of the Optima® range of engineered rainscreen cladding systems

CELEBRATING OVER  
**25 YEARS**  
EXCELLENCE IN INNOVATION